

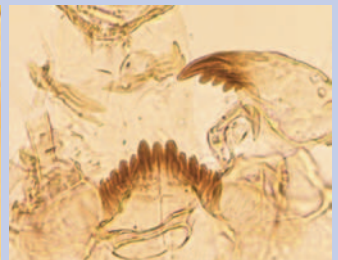
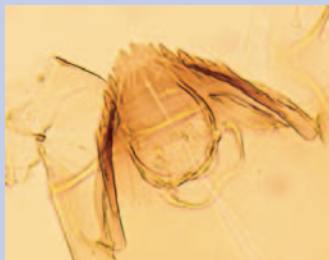
# The Identification and Use of Palaeartic Chironomidae Larvae in Palaeoecology

Stephen J. Brooks

Peter G. Langdon

Oliver Heiri

QUATERNARY RESEARCH ASSOCIATION



TECHNICAL GUIDE No. 10

**Cover photographs:**

Front cover upper, right to left shows a mandible of *Diamesa bertrami*-type, *Glyptotendipes severini*-type and *Cricotopus (Isocladius) trifasciatus*-type. Front cover lower, left to right shows a *Corynocera oliveri*-type mentum, *Rheocricotopus fuscipes*-type and *Endochironomus tendens*-type. Rear cover, left to right shows *Einfeldia dissidens*-type, *Orthocladius trigonolabis*-type and *Monodiamesa*.

**Authors' addresses:**

Stephen J. Brooks  
Department of Entomology  
The Natural History Museum  
Cromwell Road  
London SW7 5BD  
UK  
Email: s.brooks@nhm.ac.uk

Peter G. Langdon  
Palaeoecology Laboratory  
School of Geography  
University of Southampton  
Highfield  
Southampton SO17 1BJ  
UK  
Email: p.g.langdon@soton.ac.uk

Oliver Heiri  
Palaeoecology  
Laboratory of Palaeobotany and Palynology  
Institute of Environmental Biology  
Utrecht University  
Budapestlaan 4  
NL-3584 CD Utrecht  
The Netherlands  
Email: o.heiri@bio.uu.nl

Quaternary Research Association: London 2007.  
ISBN: 0907 780 717  
ISSN: 0264 9241

Printed by: MWL, Pontypool, South Wales.

**Recommended reference:**

Brooks, S.J., Langdon, P.G. and Heiri, O. 2007. The identification and use of Palaeartic Chironomidae larvae in palaeoecology. QRA Technical Guide No. 10, Quaternary Research Association, London. 276pp

# CONTENTS

ACKNOWLEDGEMENTS	iii
FOREWORD	v
<b>CHAPTER 1: INTRODUCTION</b>	1
Aims	1
What are chironomids?	3
Taxonomy	5
Chironomids as palaeoecological indicators	6
<b>CHAPTER 2: BIOLOGY AND ECOLOGY</b>	11
Life history	11
Ecology	13
Influence of key environmental variables on chironomid distribution and abundance	14
Taphonomy	22
<b>CHAPTER 3: METHODS</b>	27
Introduction	27
Field techniques	27
Laboratory techniques	31
<b>CHAPTER 4: TAXONOMIC KEYS</b>	39
Introduction	39
Basic skills used for identifying subfossil chironomid head capsules	46
Identifying the subfamilies	47
<b>CHAPTER 5: TANYPODINAE</b>	53
<b>CHAPTER 6: CHIRONOMINI</b>	71
<b>CHAPTER 7: TANYTARSINI AND PSEUDOCHIRONOMINI</b>	121
<b>CHAPTER 8: ORTHOCLADIINAE</b>	149
<b>CHAPTER 9: DIAMESINAE</b>	227
<b>CHAPTER 10: PRODIAMESINAE</b>	233
<b>CHAPTER 11: PODONOMINAE</b>	237
<b>CHAPTER 12: OTHER COMMON AQUATIC INSECT REMAINS</b>	241
REFERENCES	247
ALPHABETICAL INDEX TO TAXA	269